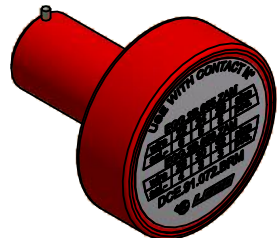
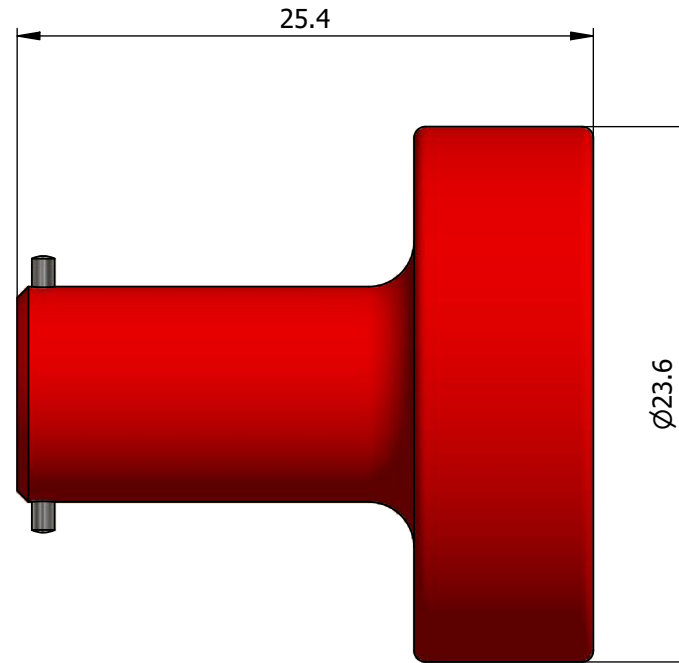


All dimensions are in millimeters (mm)



All additional information are documented on the datasheet (See below link or QR Code)
www.lemo.com/pdf/DCE.91.072.BRM.pdf

Datasheet



Positioner for female contact $\phi 0.7$

For EGG.2B.655.ZAM and EGG.2B.656.ZAM

Drawn	06.05.2021	MARI/OBAR
Checked	11.05.2021	OBAR
Modified	00	06.05.2021/MARI
	DO NOT SCALE DRAWING	



LEMO SA
 Chemin des Champs-Courbes 28
 1024 Ecublens - SWITZERLAND

Tel. (+41 21) 695 16 00
 email : info@lemo.com
www.lemo.com

CD

DCE.91.072.BRM