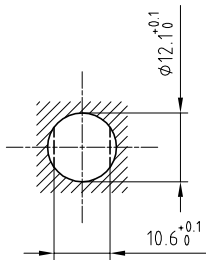


Outer shell	: Brass (UNS C38500)	Chrome plated (FS-QQ-C-320B)
Earthing crown	: Bronze (UNS C54400)	Nickel plated (FS-QQ-N-290A)
Insulator	: PEEK	-
Female contact	: Bronze (UNS C54400)	Gold plated (ISO 4523)
Earthing tag	: Brass (UNS C38500)	Gold plated (ISO 4523)
Notched nut	: Brass (UNS C38500)	Chrome plated (FS-QQ-C-320B)
Locking washer	: Bronze (UNS C52100)	Nickel plated (FS-QQ-N-290A)

Panel cut-out



Torque for mounting nut : 4.5 Nm

Spanner for notched nut : DCH.91.161.PA

Fixed socket with earthing tag , nut fixing , with key (G) , (Back panel mounting) . Series 1B , multipole (4)

ETUDE N° E10246-E1075

Echelle

—

Dessiné	25.03.2013	OVU /JPBA
Contrôle	25.03.2013	JPBA/ATVI
Modif.	00	25.03.2013/ OVU



LEMO

CH-1024 Ecublens

EAG.1B.304.CLL