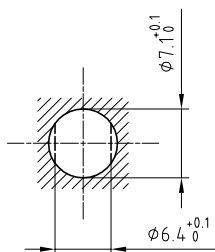


| | | |
|----------------------|-----------------------|------------------------------|
| Outer shell | : Brass (UNS C38500) | Chrome plated (FS-QQ-C-320B) |
| Earthing crown | : Cu-Be (UNS C17300) | Nickel plated (FS-QQ-N-290A) |
| Insulator | : PEEK | - |
| Female contact | : Bronze (UNS C54400) | Gold plated (ISO 27874) |
| Notched nut | : Brass (UNS C38500) | Chrome plated (FS-QQ-C-320B) |
| Locking washer | : Bronze (UNS C52100) | Nickel plated (FS-QQ-N-290A) |
| Other metallic parts | : Brass (UNS C38500) | Nickel plated (FS-QQ-N-290A) |

Panel cut-out



Torque for mounting nut : 1 Nm

Spanner for notched nut : DCH.91.101.PA

**Fixed socket , with two nuts , with keys (B) .
(Back panel mounting) .
Series 00 , multipole (4)**

ETUDE N° E9563-E1347-E6207

| | | | |
|--------------|----------|------------|-----------------|
| Echelle — | Dessiné | 25.02.2014 | OVU / JPBA |
| | Contrôle | 16.08.2016 | NHA / ATVI |
| | Modif. | 01 | 16.08.2016/ OVU |



CH-1024 Ecublens

ECB.00.304.CLL