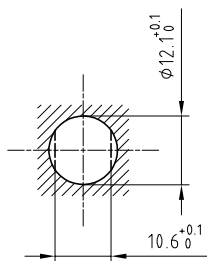


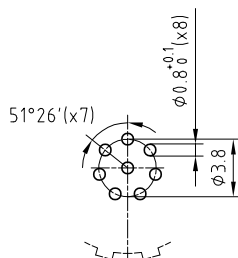
Outer shell	: Brass (UNS C38500)	Chrome plated (SAE AMS 2460)
Earthing crown	: Bronze (UNS C54400)	Nickel plated (SAE AMS QQ N 290)
Insulator	: PEEK	-
Male contact	: Brass (UNS C38500)	Gold plated (ISO 27874)
Notched nut	: Brass (UNS C38500)	Chrome plated (SAE AMS 2460)
Locking washer	: Bronze (UNS C52100)	Nickel plated (SAE AMS QQ N 290)
Other metallic part	: Brass (UNS C38500)	Nickel plated (SAE AMS QQ N 290)

Panel cut-out



Torque for mounting nut : 4.5 Nm

PCB drilling pattern



Spanner for notched nut : DCH.91.161.PA

**Fixed socket , with two nuts , with keys (J) .  
for PCB . (Back panel mounting) .  
Series 1B , multipole (8)**

ETUDE N° E9097-E1427-E7218-E7114-E2310

Echelle —	Dessiné	02.04.2020	OVU / NHA
	Contrôle	02.04.2020	NHA / CDE
	Modif.	00	02.04.2020 / OVU



**LEMO**

LEMO SA  
Chemin des Champs-Courbes 28  
1024 Ecublens - SWITZERLAND

Tel. (+41 21) 695 16 00  
email : info@lemo.com  
www.lemo.com

**ECJ.1B.308.CLD**