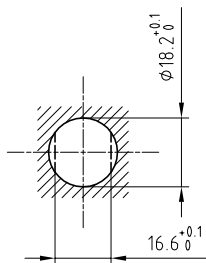


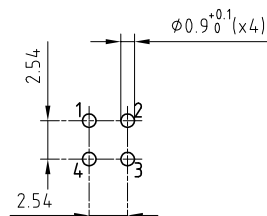
Outer shell	: Brass (UNS C38500)	Chrome plated (FS-QQ-C-320B)
Earthing crown	: Bronze (UNS C54400)	Nickel plated (FS-QQ-N-290A)
Insulator	: PEEK	-
Male contact	: Brass (UNS C34500)	Gold plated (ISO 27874)
Clip	: Cu-Be (UNS C17200)	-
Conical nut	: Brass (UNS C38500)	Chrome plated (FS-QQ-C-320B)
Locking washer	: Bronze (UNS C52100)	Nickel plated (FS-QQ-N-290A)
Other metallic parts	: Brass (UNS C38500)	Nickel plated (FS-QQ-N-290A)
Adaptor rivet	: Brass	Gold plated (ISO 27874)
Contact wire	: Brass (UNS C27400)	Tinned
Position insert	: FEP	-

Panel cut-out



Torque for mounting nut : 9 Nm

A-A cross-section (PCB drilling pattern)



Fixed socket , with two nuts , with keys (L) , with elbow (90°) contact for PCB . (Back panel mounting) . Series 3B , multipole (4)

ETUDE N° E1308

Echelle

Dessiné	25.01.2017	OVU / NHA
Contrôle	25.01.2017	NHA / ATVI
Modif.	00	25.01.2017/ OVU



CH-1024 Ecublens

**ECL.3B.304.CLV**