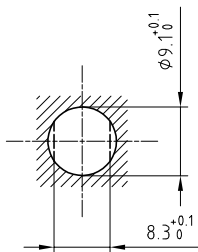


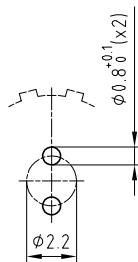
Outer shell	: Brass (UNS C38500)	Chrome plated (FS-QQ-C-320B)
Earthing crown	: Bronze (UNS C54400)	Nickel plated (FS-QQ-N-290A)
Insulator	: PEEK	-
Female contact	: Bronze (UNS C54400)	Gold plated (ISO 27874)
Notched nut	: Brass (UNS C38500)	Chrome plated (FS-QQ-C-320B)
O-rings	: Silicone (MVQ)	-

Panel cut-out



Torque for mounting nut : 2.5 Nm

PCB drilling pattern



Spanner for notched nut : DCH.91.121.PA

**Fixed socket with nut fixing , with keys (A) ,  
for PCB . (Back panel mounting) .  
Series 0T , multipole (2)**

ETUDE N° E10703-E10425-E10416-E1241-E10630

Echelle —	Dessiné	22.08.2018	OVU / NHA
	Contrôle	22.08.2018	NHA / ATVI
	Modif.	00	22.08.2018/ OVU



**LEMO**

LEMO SA  
Chemin des Champs-Courbes 28  
1024 Ecublens - SWITZERLAND

Tel. (+41 21) 695 16 00  
email : info@lemo.com  
www.lemo.com

**EEA.0T.302.CLN**