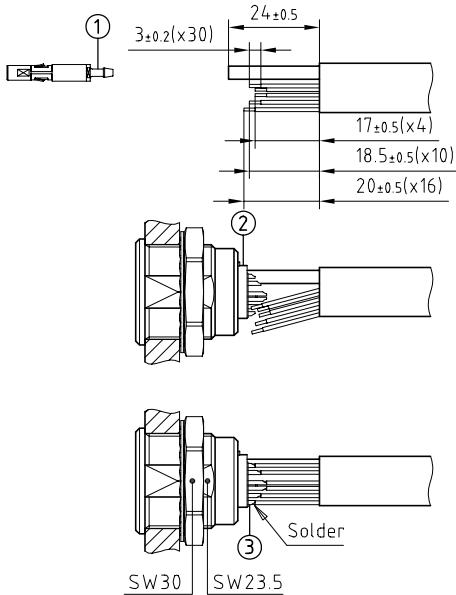


Outer shell	: Brass (UNS C38500)	Chrome plated (FS-QQ-C-320B)
Earthing crown	: Brass (UNS C38500)	Nickel plated (FS-QQ-N-290A)
Insulator	: PEEK	-
Female contact	: Bronze (UNS C54400)	Gold plated (ISO 4523)
Locking washer	: Bronze (UNS C52100)	Nickel plated (FS-QQ-N-290A)
Other metallic parts	: Brass (UNS C38500)	Nickel plated (FS-QQ-N-290A)

Fluidic contact subassembly:

Female sleeve	: Stainless steel (AISI304)	-
Fluidic tube	: Stainless steel (AISI304)	-
Female valve	: CuNiZn alloy	-
Clip	: Cu-Be (UNS C17200)	-
Spring	: Steel	-
O-rings	: Viton (FPM)	-

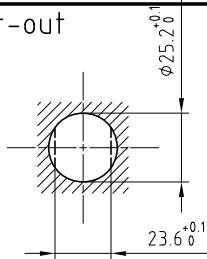


1. Strip the cable according to the given dimensions . Fit the tube by pushing it over the fluidic tube①

2. Drill the panel hole and install the connector with the appropriate tool . Fit the fluidic contact subassembly gently into the insulator②. Check that the fluidic contact hold in the insulator and they should remain in position when each tube is given a gentle pull .

3. Arrange the conductors according to the insulator marking by avoiding to twist them . Fit conductor into the contacts③and solder . Verify that insulator and insulation remain clean .

Panel cut-out



Fluidic extractor : DCC 91.384.5LA
Recommended tube: $\phi 1.8 / \phi 3$ mm for size 2B to 5B

**Fixed socket with nut fixing , with key (G) ,
Séries 4B , 1fluidic(type P1) + 30BT($\phi 0.7$)**

ETUDE N° E4193-E6244

Echelle	Dessiné	15.02.07	OVU / RMO
	Contrôle	15.02.07	RMO / CDE
	Modif.	00	15.02.07 / OVU



CH-1024 Ecublens

EGG.4B.P15.CLL