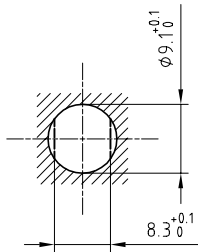


Outer shell	: Brass (UNS C38500)	Chrome plated (FS-QQ-C-320B)
Earthing crown	: Bronze (UNS C54400)	Nickel plated (FS-QQ-N-290A)
Insulator	: PTFE	-
Female contact	: Bronze (UNS C54400)	Gold plated (ISO 4523)
Male contact	: Brass (UNS C38500)	Gold plated (ISO 4523)
Locking washer	: Bronze (UNS C52100)	Nickel plated (FS-QQ-N-290A)
Other metallic parts	: Brass (UNS C38500)	Nickel plated (FS-QQ-N-290A)

Panel cut-out



Torque for mounting nut : 2.5 Nm

Spanner for nut : DCA.91.161.1TN or  
Spanner for nut : DCG.91.161.1TN

**Fixed socket , with nut fixing , protruding shell .  
Series 0S , multipole (2) (Longer thread)**

Echelle —	Dessiné	07.07.05	OVU / RMO
	Contrôle	07.07.05	RMO / CDE
	Modif.	00	07.07.05 / OVU

ETUDE N° E4056



**LEMO**

CH-1024 Ecublens

**EHP.0S.302.YLL**