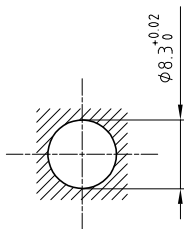


Outer shell	: Brass (UNS C38500)	Chrome plated (SAE AMS 2460)
Earthing crown	: Bronze (UNS C54400)	Nickel plated (SAE AMS QQ N 290)
Insulator	: PEEK	-
Female contact	: Bronze (UNS C54400)	Gold plated (ISO 27874)

Panel cut-out



Fixed socket to press or fix with epoxy , with key (G) , Series 0B , multipole (5)

ETUDE N° E9014-E7218-E10416

Echelle —	Dessiné	27.11.2020	OVU / NHA
	Contrôle	27.11.2020	NHA / CDE
	Modif.	00	27.11.2020 / OVU



LEMO

LEMO SA
Chemin des Champs-Courbes 28
1024 Ecublens - SWITZERLAND

Tel. (+41 21) 695 16 00
email : info@lemo.com
www.lemo.com

EJG.0B.305.CLL