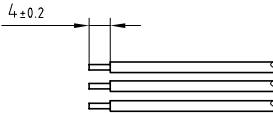
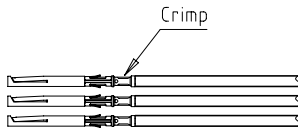


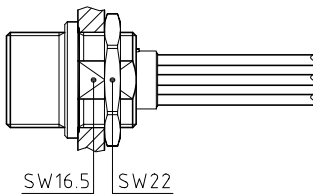
Outer shell	: Brass (UNS C38500)	Chrome plated (FS-QQ-C-320B)
Earthing crown	: Bronze (UNS C54400)	Nickel plated (FS-QQ-N-290A)
Insulator	: PEEK	-
Female contact	: Bronze (UNS C54400)	Gold plated (ISO 4523)
Clip	: Cu-Be (UNS C17200)	-
O-rings	: Silicone (MVQ)	-
Other metallic parts	: Brass (UNS C38500)	Nickel plated (FS-QQ-N-290A)



1. Strip the cable according to the given dimensions .

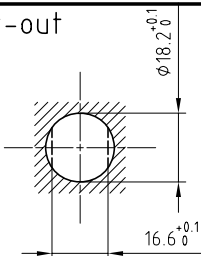


2. Fix the positioner on the crimping tool and set selector to the number corresponding to the conductor AWG as indicated on the positioner label. Fit conductor into the contacts and make sure it is visible through its inspection hole in the crimp barrel . Open crimping tool then push contact fully into positioner and complete one crimping cycle . Remove from crimping tool and check that conductor is secure in contact and shows in inspection hole .



3. Drill the panel hole and install the connector with the appropriate tool . Slide crimped contact-conductor combinations according to the insulator marking , avoiding twisting of the conductors . Fit the contacts gently into the insulator and verify that no conductors are crossed before pushing them in completely . Check that all contacts hold in the insulator by verifying their alignment at the front of the insulator and they should remain in position when each conductor is given a gentle pull . Check that retention of the contact is correct with the recommended test tool .

Panel cut-out



Torque for mounting nut : 9 Nm

Crimping tool : DPC.91.701.V  
 Extractor : DCF.91.133.5LT  
 Female contact : EGG.3B.666.ZZM  
 Female positioner : DCE.91.133.BVM  
 Female retention testing tool: DCK.91.132.5LRM  
 For conducteur : AWG 20 max.

Test voltage : 1200 kV AC (mated)  
 Rated current : 13A  
 Endurance : 1000 cycles mini  
 Working temp. : -55°C to 200°C

Spanner for nut : DCA.91.282.2TN or  
 Spanner for nut : DCG.91.282.2TN

**Fixed socket with nut fixing , screw coupling , with key (G) .**  
**Mate only with plug FVG.3B.308.CYBC70**  
**Series 3B , multipole (8) . (IP 68 when mated)**

ETUDE N° E4.220.4.010

Echelle —	Dessiné	02.06.08	OVU / RMO
	Contrôle	24.11.09	JPBA/ CDE
	Modif.	01	24.11.09 / OVU



**LEMO**

CH-1024 Ecublens

**EVG.3B.308.CYP**