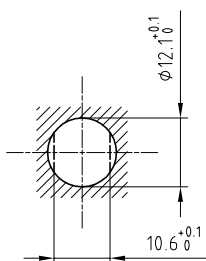


Outer shell	: Brass (UNS C38500)	Chrome plated (FS-QQ-C-320B)
Earthing crown	: Bronze (UNS C54400)	Nickel plated (FS-QQ-N-290A)
Insulator	: PEEK	-
Female contact	: Bronze (UNS C54400)	Gold plated (ISO 27874)
Male contact	: Brass (UNS C38500)	Gold plated (ISO 27874)
Locking washer	: Bronze (UNS C52100)	Nickel plated (FS-QQ-N-290A)
Other metallic parts	: Brass (UNS C38500)	Nickel plated (FS-QQ-N-290A)

Panel cut-out



Torque for mounting nut : 4.5 Nm

**Fixed socket , with nut fixing , for plug FVN .
Series 1S , multipole (4)**

ETUDE N° E2209

Echelle —	Dessiné	20.12.2006	OVU / RMO
	Contrôle	10.12.2015	NHA / ATVI
	Modif.	01	10.12.2015 / OVU



LEMO

CH-1024 Ecublens

EVP.1S.304.CLL