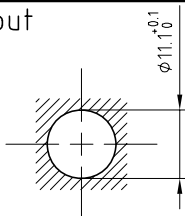


Outer shell	: Brass (UNS C38500)	Nickel plated (FS-QQ-N-290A)
Earthing crown	: Bronze (UNS C54400)	Nickel plated (FS-QQ-N-290A)
Insulator	: PEEK	-
Female contact	: Bronze (UNS C54400)	Gold plated (ISO 4523)
Male contact	: Brass (UNS C34500)	Gold plated (ISO 4523)
Ground pin	: Brass (UNS C38500)	Gold plated (ISO 4523)
Locking washer	: Bronze (UNS C52100)	Nickel plated (FS-QQ-N-290A)
Other insulating parts	: PPS	-
Other metallic parts	: Brass (UNS C38500)	Nickel plated (FS-QQ-N-290A)

Panel cut-out



Torque for mounting nut : 4.5 Nm

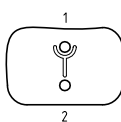
Spanner for notched nut : DCH.91.141.PA

B View

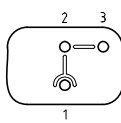
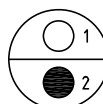
A View

B View

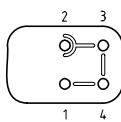
A View



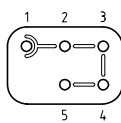
302



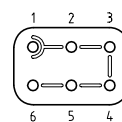
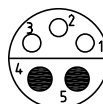
303



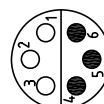
304



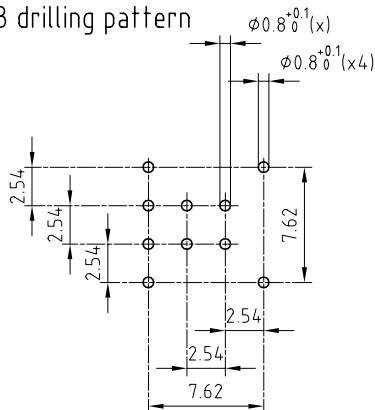
305



306



PCB drilling pattern



Elbow socket (90°) with two nuts ,
for PCB . (Back panel mounting) .
Series 1S , multiple

ETUDE N° E7074

Echelle

Dessiné

02.09.05

OVU / RMO

Contrôle

02.09.05

RMO / CDE

Modif.

00

02.09.05 / OVU



LEMO

CH-1024 Ecublens

EXP.1S.30__.HLN