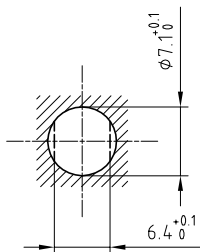


Outer shell	: Brass (UNS C38500)	Chrome plated (FS-QQ-C-320B)
Insulator	: PEEK	-
Male contact	: Brass (UNS C38500)	Gold plated (ISO 27874)
Locking washer	: Bronze (UNS C52100)	Nickel plated (FS-QQ-N-290A)
Other metallic parts	: Brass (UNS C38500)	Nickel plated (FS-QQ-N-290A)

Panel cut-out



Torque for mounting nut : 1 Nm

Spanner for nut : DCA.91.149.0TN or
Spanner for nut : DCG.91.149.0TN

**Straight plug , non-latching , nut fixing , with key (G) .
Series 00 , multipole (4)**

Echelle —	Dessiné	08.05.2007	OVU / RMO
	Contrôle	24.08.2016	NHA / ATVI
	Modif.	02	24.08.2016/ OVU

ETUDE N° E1562-E1347



LEMO

CH-1024 Ecublens

FAG.00.304.CLA