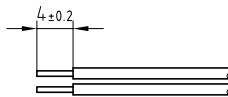
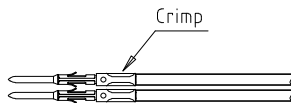


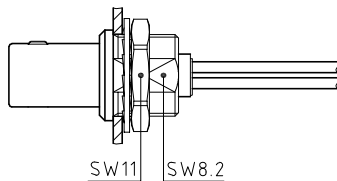
Outer shell	: Brass (UNS C38500)	Chrome plated (SAE AMS 2460)
Insulator	: PEEK	-
Male contact	: Brass (UNS C34200)	Gold plated (ISO 27874)
Clip	: Stainless steel	-
Locking washer	: Bronze (UNS C52100)	Nickel plated (SAE AMS QQ N 290)
Other metallic parts	: Brass (UNS C38500)	Nickel plated (SAE AMS QQ N 290)



1. Strip the cable according to the given dimensions .

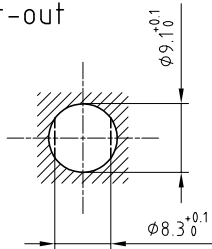


2. Fix the positioner on the crimping tool and set selector to the number corresponding to the conductor AWG as indicated on the positioner label. Fit conductor into the contacts and make sure it is visible through its inspection hole in the crimp barrel . Open crimping tool then push contact fully into positioner and complete one crimping cycle . Remove from crimping tool and check that conductor is secure in contact and shows in inspection hole .



3. Drill the panel hole and install the connector with the appropriate tool . Slide crimped contact-conductor combinations according to the insulator marking , avoiding twisting of the conductors . Fit the contacts gently into the insulator and verify that no conductors are crossed before pushing them in completely . Check that all contacts hold in the insulator by verifying their alignment at the front of the insulator and they should remain in position when each conductor is given a gentle pull .

Panel cut-out



Torque for mounting nut : 2.5 Nm

Crimping tool
Extractor
Male contact
Male positioner

: DPC.91.701.V
: DCF.92.070.3LT
: FGG.0B.555.ZZC
: DCE.91.070.BVC

Spanner for nut
Spanner for nut

: DCA.91.161.1TN or
: DCG.91.161.1TN

**Fixed plug , non-latching , nut fixing , with key (G) ,
with extended insulator .
Series 0B , multipole (4)**

ETUDE N° E1181-E10073

Echelle	Dessiné	05.01.2021	OVU / NHA
	Contrôle	05.01.2021	NHA / CDE
	Modif.	00	05.01.2021/ OVU



LEMO

LEMO SA
Chemin des Champs-Courbes 28
1024 Ecublens - SWITZERLAND

Tel. (+41 21) 695 16 00
email : info@lemo.com
www.lemo.com

FAG.0B.304.CYC