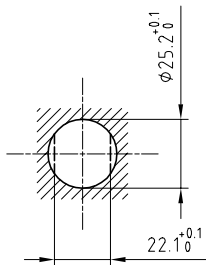


Outer shell	: Brass (UNS C38500)	Chrome plated (FS-QQ-C-320B)
Latch sleeve	: Stainless steel (AISI416)	-
Front ring	: Brass (UNS C38500)	Nickel plated (FS-QQ-N-290A)
Inner shell	: Brass (UNS C38500)	Nickel plated (FS-QQ-N-290A)
Insulators	: PTFE	-
Male contact	: Brass (UNS C38500)	Gold plated (ISO 4523)
Male sleeve	: Cu-Be (UNS C17300)	Gold plated (ISO 4523)
Retaining ring with tags	: Brass (UNS C38500)	Gold plated (ISO 4523)
Retaining ring	: Brass (UNS C38500)	Nickel plated (FS-QQ-N-290A)
Hexagonal nut	: Brass (UNS C38500)	Nickel plated (FS-QQ-N-290A)
Locking washer	: Bronze (UNS C52100)	Nickel plated (FS-QQ-N-290A)
Earthing washer	: Brass (UNS C27400)	Cu-Sn-Zn plated
Sealing gasket	: Silicone	-
Other metallic part	: Brass (UNS C38500)	Gold plated (ISO 4523)
Gasket	: Silicone	-

Panel cut-out



Torque for mounting nut : 20 Nm

**Fixed plug with round flange , with earthing sleeve and tag , nut fixing .
Series 4A , triaxial (75Ω)**

ETUDE N° E2015

Echelle

Dessiné 12.01.95 OVU / GJE

Contrôle 20.04.05 RMO / CDE

Modif. 01 20.04.05 / OVU



LEMO

CH-1024 Ecublens

FXF.4A.675.CTA