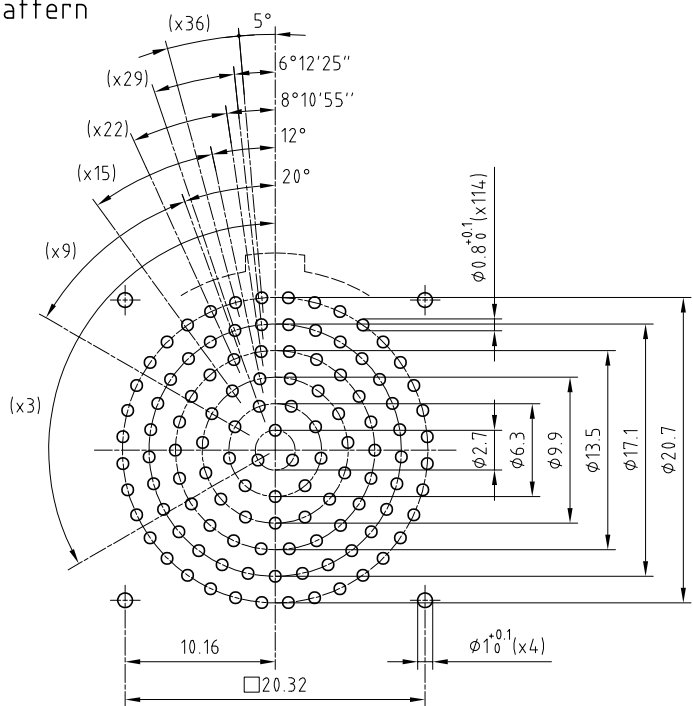


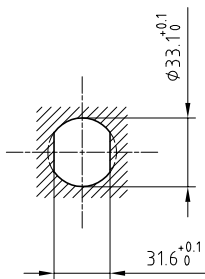
Outer shell	: Aluminium (AA 6262A) or (AA 6023) Anthracite nickel
Earthing crown+gland	: Brass (UNS C38500)+Fluorosilicone (FVMQ) Gold plated (ISO 27874)
Insulator	: PEEK
Female contact	: Bronze (UNS C54400) Gold plated (ISO 27874)
Conical nut	: Aluminium (AA 6262A) or (AA 6023) Anthracite nickel
Ground pin	: Stainless steel (AISI303) Gold plated (ISO 27874)
Sealing resin	: Epoxy
O-ring	: Viton (FPM)

Spanner for conical nut	: DCM.65.040.8PA
Insert for conical nut	: DCM.65.340.AZ

PCB drilling pattern



Panel cut-out



Torque for mounting nut : 8 Nm

Fixed socket , nut fixing , with keys (W) , watertight , for PCB . (Back panel mounting) . Series 5M , multipole (114)

ETUDE N° E6367-E11295

Echelle	Dessiné	28.08.2008	DMI /JPBA
	Contrôle	05.02.2021	NHA / CDE
	Modif.	04	05.02.2021/ OVU



LEMO

LEMO SA
Chemin des Champs-Courbes 28
1024 Ecublens - SWITZERLAND

Tel. (+41 21) 695 16 00
email : info@lemo.com
www.lemo.com

HEW.5M.114.XLNP