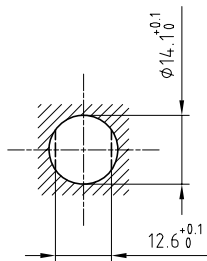


Outer shell	: Brass (UNS C38500)	Chrome plated (FS-QQ-C-320B)
Earthing crown	: Bronze (UNS C54400)	Nickel plated (FS-QQ-N-290A)
Insulator	: PTFE	-
Female contact	: Bronze (UNS C54400)	Gold plated (ISO 4523)
Other metallic parts	: Brass (UNS C38500)	Nickel plated (FS-QQ-N-290A)
Sealing resin	: Epoxy	-
O-rings	: Viton (FPM)	-

Panel cut-out



Torque for mounting nut : 5 Nm

**Fixed socket , nut fixing , with key (G) ,
vacuumtight .
Series 0K , coaxial (50Ω)**

ETUDE N°

Echelle —	Dessiné	30.06.06	OVU / RMO
	Contrôle	30.06.06	RMO / CDE
	Modif.	00	30.06.06 / OVU



LEMO

CH-1024 Ecublens

HGG.0K.250.CTLPV