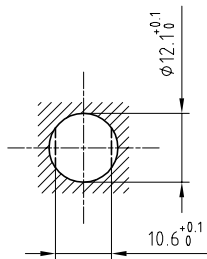


Outer shell	: Brass (UNS C38500)	Chrome plated (FS-QQ-C-320B)
Earthing crown	: Bronze (UNS C54400)	Nickel plated (FS-QQ-N-290A)
Insulator	: PEEK	-
Female contact	: Bronze (UNS C54400)	Gold plated (ISO 4523)
Locking washer	: Bronze (UNS C52100)	Nickel plated (FS-QQ-N-290A)
Other metallic parts	: Brass (UNS C38500)	Nickel plated (FS-QQ-N-290A)
Sealing resin	: Epoxy	-
O-ring	: Viton (FPM)	-

Panel cut-out



Torque for mounting nut : 4.5 Nm

Spanner for nut : DCA.91.201.4TN or
Spanner for nut : DCG.91.201.4TN

**Fixed socket with nut fixing , with key (G) ,
vacuumtight .
Series 1B , multipole (6)**

ETUDE N°

Echelle

Dessiné

03.03.97

LMO / JCHU

Contrôle

10.06.05

RMO / CDE

Modif.

01

10.06.05 / OVU



LEMO

CH-1024 Ecublens

HGG.1B.306.CLLPV