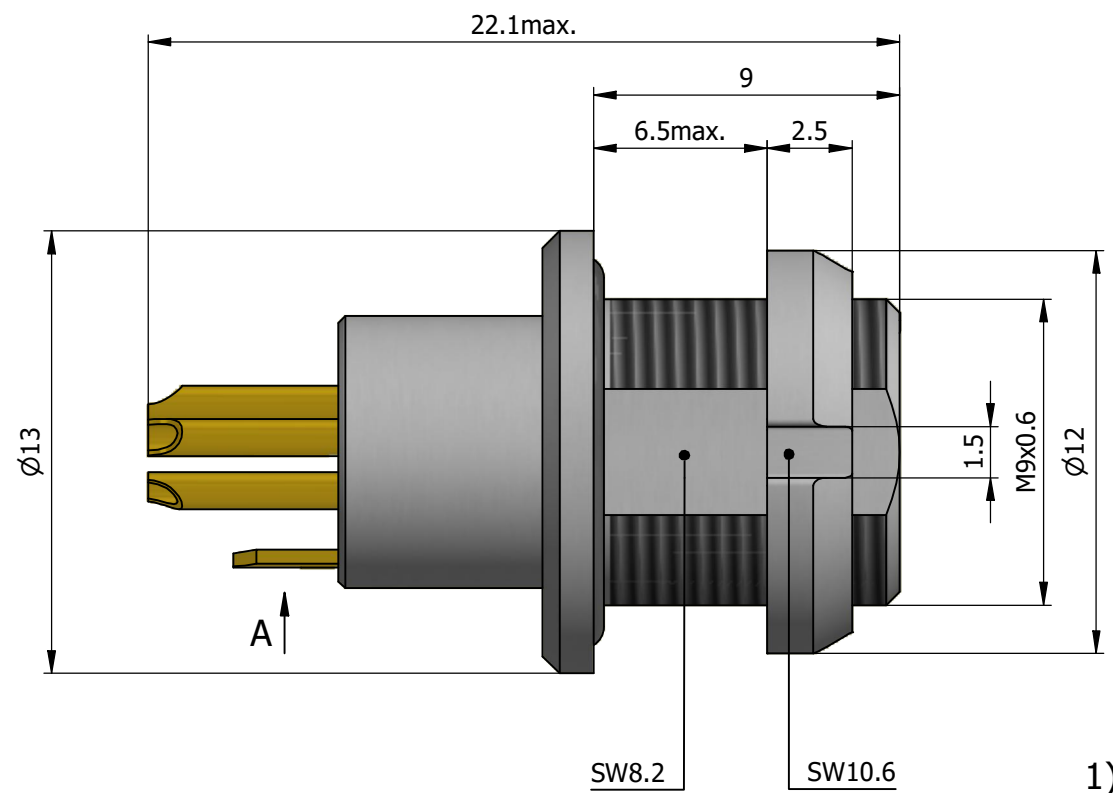
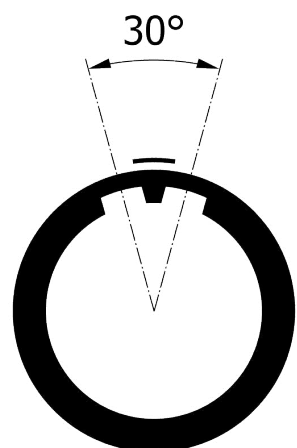
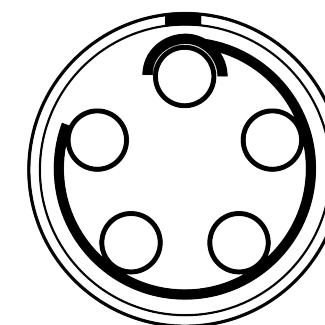


All dimensions are in millimeters (mm)

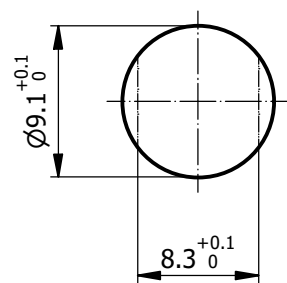
Alignment Key  
Front View



Insert Configuration  
Rear View

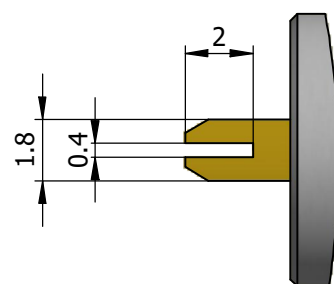


Recommended Panel Cut-Out



Mounting nut torque (Nm)  
Metal shell = 2.5  
Plastic shell = 0.4

View A



**Note:**

1) This picture is generic and for illustrative purposes only, and may show different keying, materials, colour, finish, and contact configuration. Minor shape or feature variations to actual item may be present.

All additional information are documented on the datasheet (See below link or QR Code)  
[www.lemo.com/pdf/HMA.0B.305.CLLP.pdf](http://www.lemo.com/pdf/HMA.0B.305.CLLP.pdf)

Model Alignment Key Series Insert Config. Housing Insulator Contact Variant  
HMA.0B.305.CLLP

<p>Datasheet</p>	<p><b>Fixed socket, nut fixing (back panel mounting)</b></p> <p>Series 0B</p>		<p>Drawn 20.01.2022 MARI/MARI</p>
	<p>LEMO SA Chemin des Champs-Courbes 28 1024 Ecublens - SWITZERLAND</p>		<p>Checked 21.01.2026 OBAR</p>
	<p>Tel. (+41) 21 695 16 00 email : info@lemo.com www.lemo.com</p>		<p>Modified 01 21.01.2026/JMIG</p>
	<p>CD</p>		<p>DO NOT SCALE DRAWING</p>
<p><b>HMA.0B.305.CLLP</b></p>			