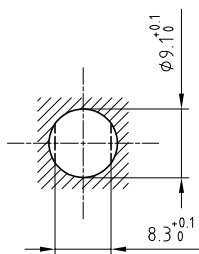


Outer shell	: Brass (UNS C38500)	Black chrome (MIL DTL 14538)
Earthing crown tag	: Bronze (UNS C54400)	Gold plated (ISO 27874)
Insulator	: PEEK	-
Male contact	: Brass (UNS C38500)	Gold plated (ISO 27874)
Locking washer	: Bronze (UNS C52100)	Nickel plated (SAE AMS QQ N 290)
Other metallic part	: Brass (UNS C38500)	Nickel plated (SAE AMS QQ N 290)
Sealing resin	: Epoxy	-
O-rings	: Silicone (MVQ)	-

Panel cut-out



Torque for mounting nut : 2.5 Nm

Spanner for nut : DCA.91.161.1TN or  
Spanner for nut : DCG.91.161.1TN

**Fixed socket with earthing tag , nut fixing , with keys (J) , watertight .  
Series 0T , multipole (5)**

ETUDE N° E11283-E10425

Echelle —	Dessiné	09.04.2020	OVU / NHA
	Contrôle	09.04.2020	NHA / CDE
	Modif.	00	09.04.2020 / OVU



**LEMO**

LEMO SA  
Chemin des Champs-Courbes 28  
1024 Ecublens - SWITZERLAND

Tel. (+41 21) 695 16 00  
email : info@lemo.com  
www.lemo.com

**HNJ.0T.305.KLAP**