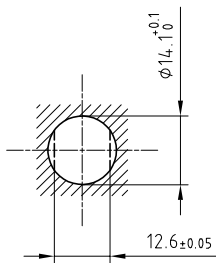


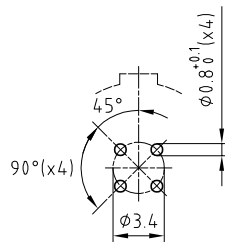
|                |                       |                              |
|----------------|-----------------------|------------------------------|
| Outer shell    | : PSU                 | Grey                         |
| Conical nut    | : PSU                 | Black                        |
| Insulator      | : PEEK                | -                            |
| Female contact | : Bronze (UNS C54400) | Gold plated (ISO 27874)      |
| Hexagonal nut  | : Brass (UNS C38500)  | Nickel plated (FS-QQ-N-290A) |

Panel cut-out



Torque for mounting nut : 1.5 Nm

PCB drilling pattern



Spanner for conical nut : POB.186.GN

**Fixed socket , with two nuts , with key (G) ,  
for PCB . (Back panel mounting) .  
Series 1P , multipole (4)**

ETUDE N° E6114-E9892

|         |          |            |                 |
|---------|----------|------------|-----------------|
| Echelle | Dessiné  | 10.05.2019 | OVU / NHA       |
|         | Contrôle | 10.05.2019 | NHA / ATVI      |
|         | Modif.   | 00         | 10.05.2019/ OVU |



**REDEL**

Redel SA  
Rue du canal 2  
1450 Ste-Croix - SWITZERLAND

Tel. (+41 24) 455 25 00  
Fax. (+41 24) 455 25 01

**PKG.M0.4GL.YN**