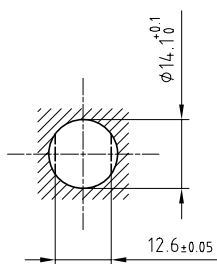


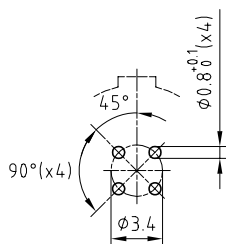
Outer shell	: PSU	Grey
Conical + round flange	: PSU	Grey
Insulator	: PEEK	-
Female contact	: Bronze (UNS C54400)	Gold plated (ISO 4523)
Hexagonal nut	: Brass (UNS C38500)	Nickel plated (FS-QQ-N-290A)
Flat ring	: Silicone (MVQ)	-
Gland	: Silicone (SEBS)	-

Panel cut-out



Torque for mounting nut : 1.5 Nm

PCB drilling pattern



Fixed socket , nut fixing , with key (G) ,  
watertight , for PCB .  
Series 1P , multipole (4)

Etude N° E2459

Echelle —	Dessiné	01.07.09	OVU / JPBA
	Contrôlé	01.07.09	JPBA/ CDE
	Ref.CAO		/
	Modif.	00	01.07.09 / OVU



CH-1450 Ste-CROIX

**PNG.M0.4GL.NG**