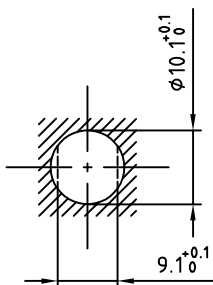


Outer shell	: Brass (UNS C38500)	Chrome plated (SAE AMS 2460)
Earthing crown	: Bronze (UNS C54400)	Nickel plated (SAE AMS QQ N 290)
Insulator	: PEEK	-
Female-male contact	: Bronze (UNS C54400)	Gold plated (ISO 27874)
Other metallic parts	: Brass (UNS C38500)	Nickel plated (SAE AMS QQ N 290)

Panel cut-out



Torque for mounting nut : 2.5 Nm

Fixed coupler , nut fixing , with key (J) at the flange end and key (G) at the other end .
Series 0B , multipole (4)

Echelle	Dessiné	23.09.2020	FNI / NHA
	Contrôle	24.09.2020	NHA / CDE
	Modif.	00	23.09.2020/ FNI

ETUDE N°



CH-1024 Ecublens

RJG.0B.304.CLA